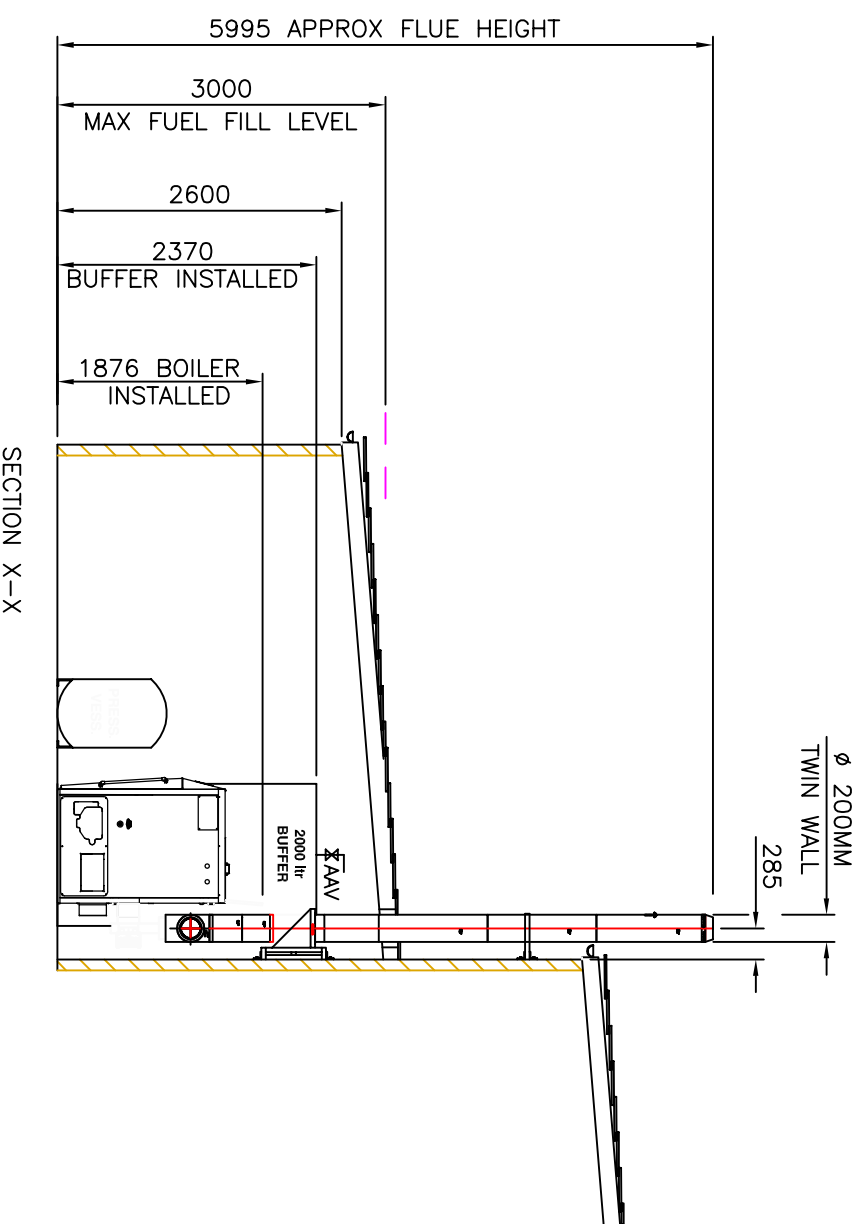
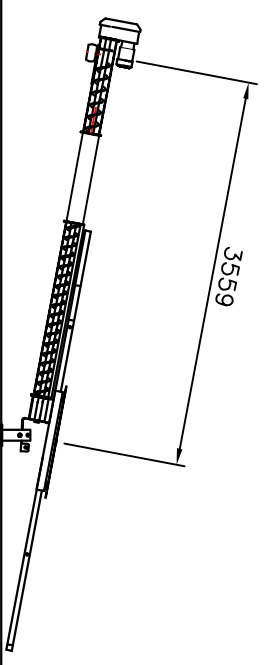


SLOPED FLOOR TO DIRECT FUEL ON TO AGITATOR. MIN ANGLE 45°.



SECTION X-X



VIEW ON ARROW 'A' FOR AUGER LENGTH

NOTE:
FUEL STORE CONSTRUCTION TO BE OF HALF HOUR FIRE RESISTANT MATERIAL

BOILER ROOM TO BE LINED WITH HALF HOUR FIRE RESISTANT MATERIAL ON ANY COMBUSTIBLE SURFACES.

NO ELECTRICAL EQUIPMENT, LIGHTS ETC TO BE WITHIN FUEL STORE AREA.

ELECTRICAL SUPPLY AND MAINS WATER TO BE SUPPLIED TO BOILER ROOM, ALL BY OTHERS.

FOR GENERAL CONSTRUCTION OF FUEL STORE PLEASE REFER TO TRECO DWG No STD/017 RevB.

NOTES
1. UNLESS NOTED OTHERWISE ALL DIMENSIONS ARE IN MILLIMETRES & ALL LEVELS ARE IN METRES AOD.

REV.	DESCRIPTION	BY	CHECKED	DATE	
C					
B	REVISED TO CUSTOMER LAYOUT PREFERENCE	RJC		25/09/13	
A	FIRST ISSUE	RJC	UN CHECKED	20/09/13	
MK	REVISIONS	DRN	CHK	APP	DATE

HUMBER COURT FARM
L AND S 50KW
2000L BUFFER TANK
PROVISIONAL LAYOUT FOR BOILER ROOM AND FUEL STORE.

PRELIMINARY

ORIGINAL DRAWING SIZE A3 SCALENTS

DRAWING NUMBER	REV.
HUMBER - 001	B



Wye Valley Energy
A Treco Group Company
Wye Valley Energy Farm,
Humber Court
Humber,
Leominster,
Herefordshire.
HR6 ONE

01568 255901